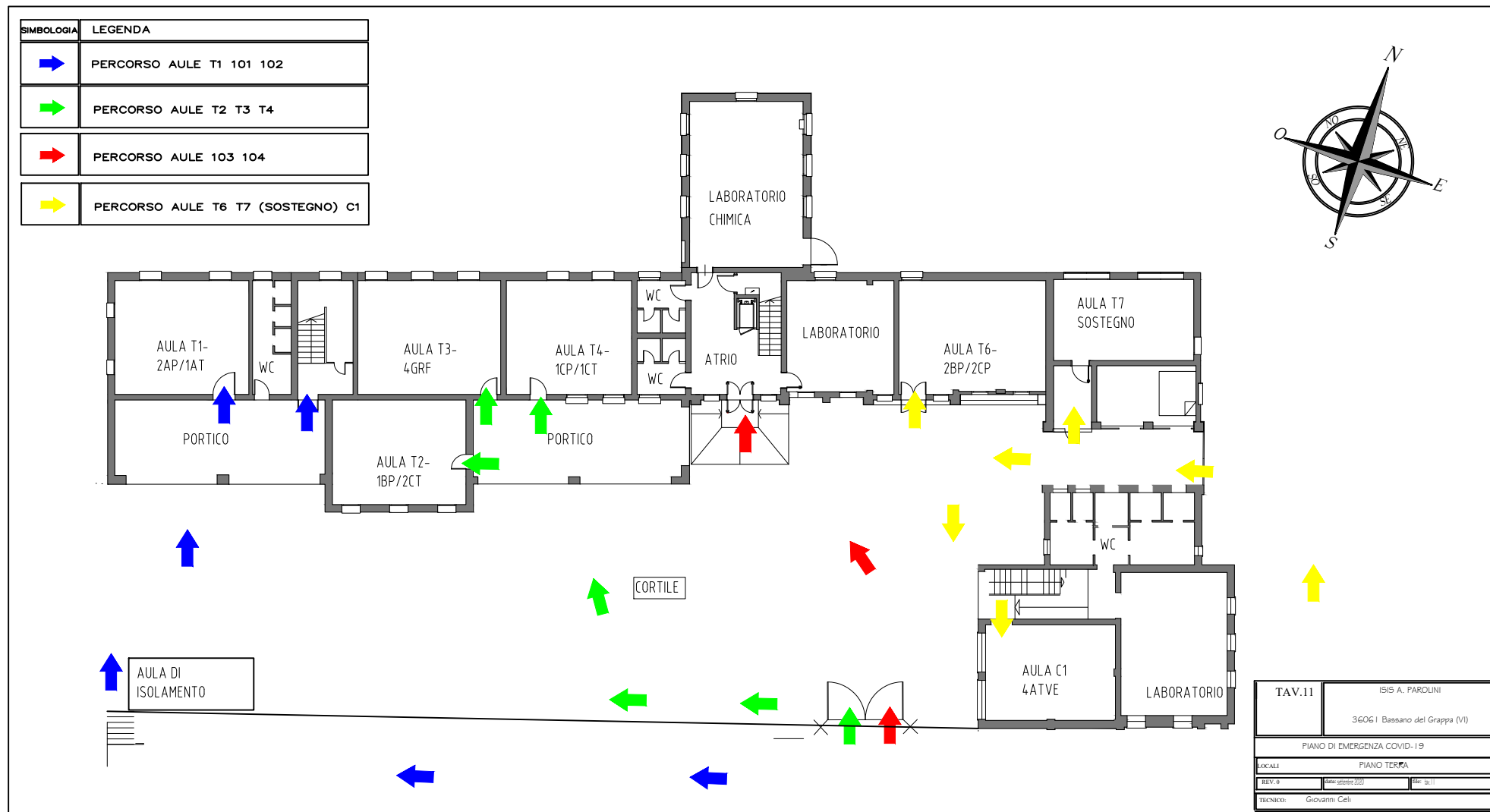
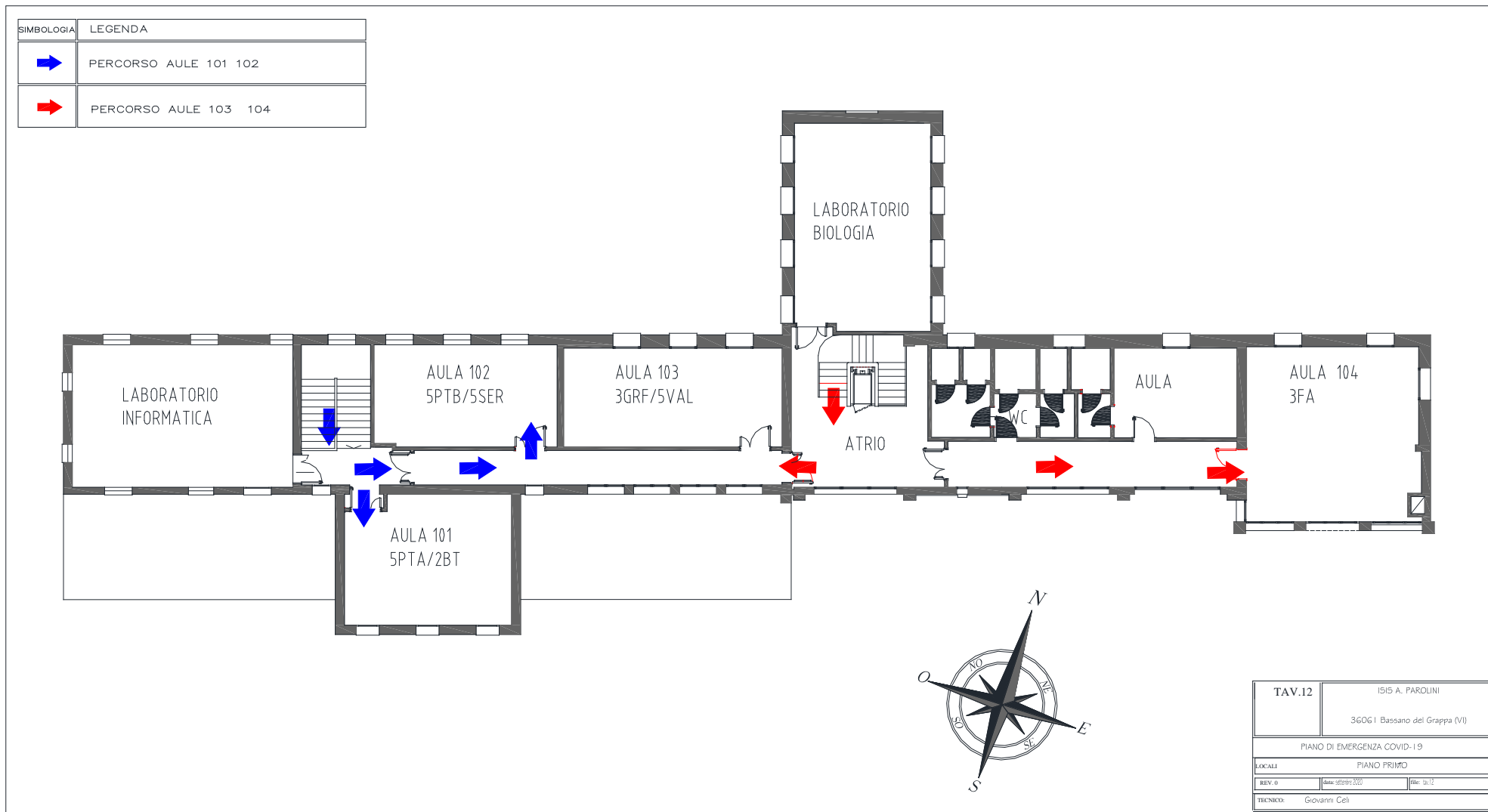


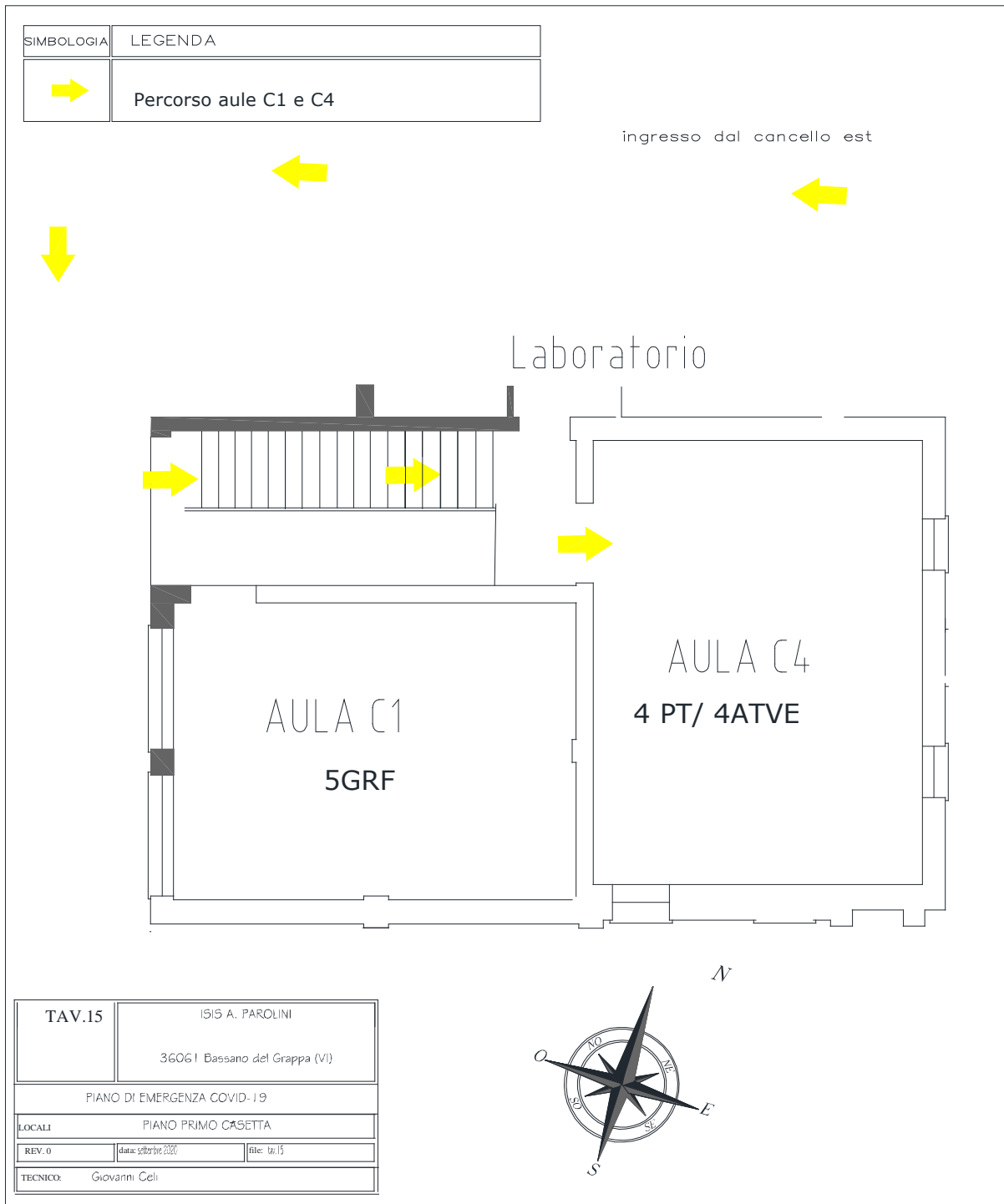
Sede centrale, "blocco aule" piano terra





Sede centrale, "blocco aule" piano primo

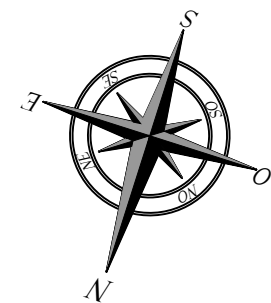
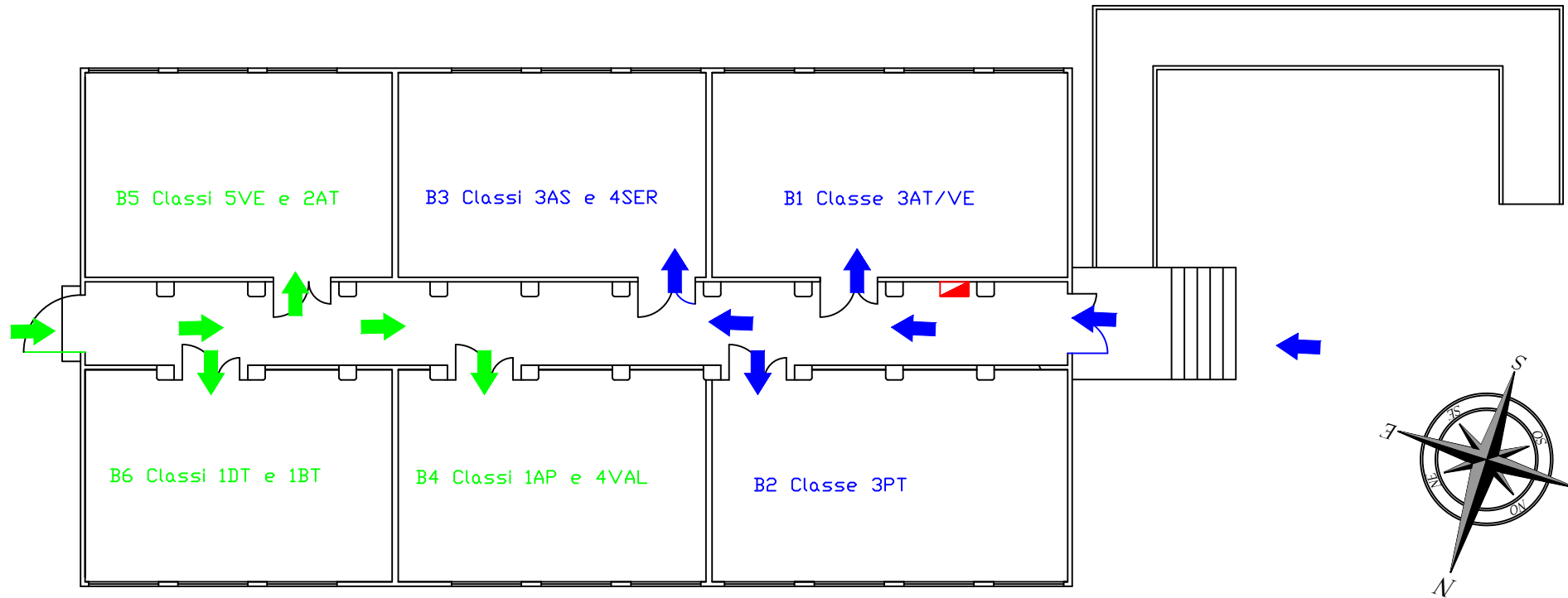


Sede centrale "casetta" piano primo



Sede centrale, "containers"

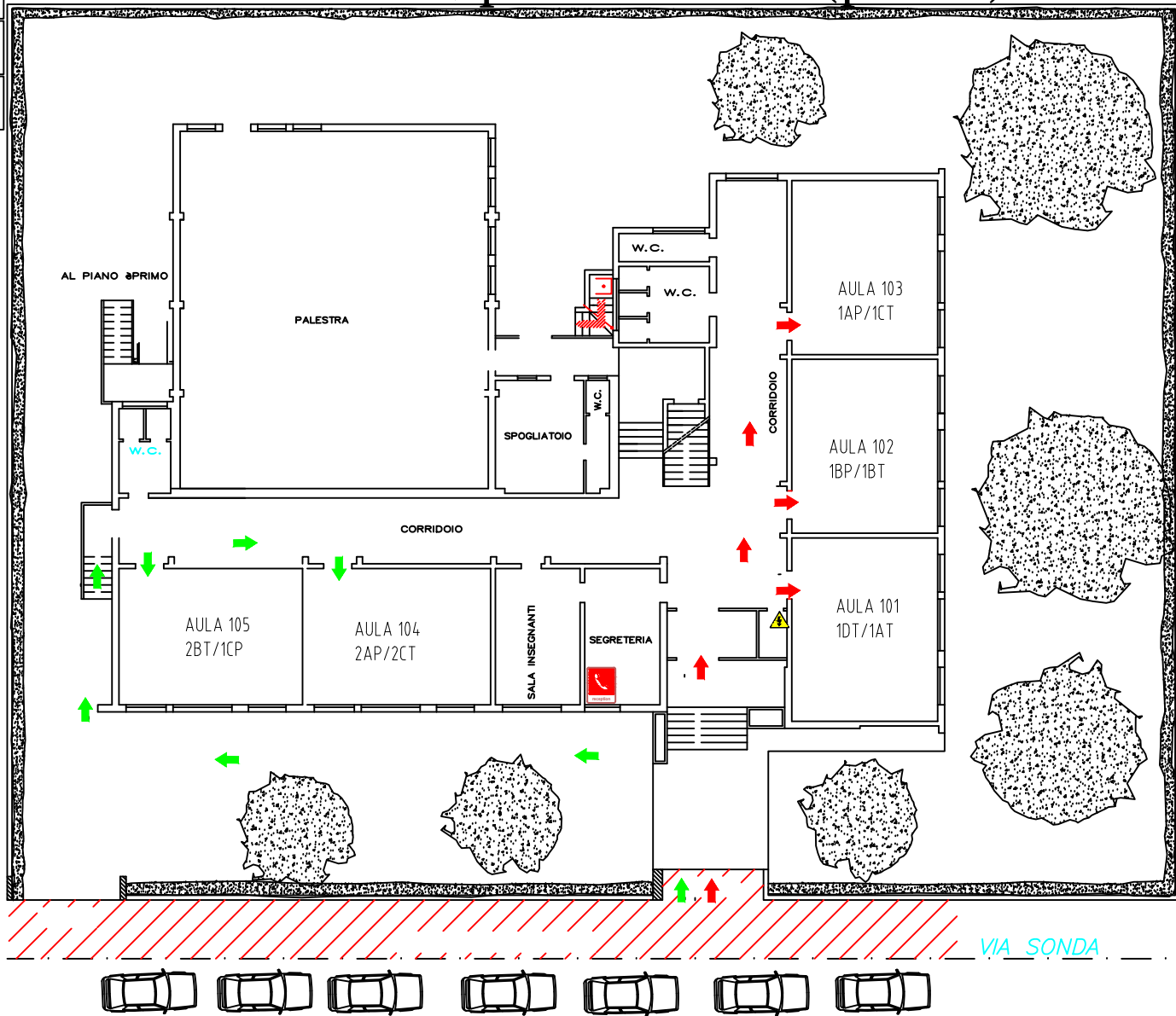
SIMBOLOGIA	LEGENDA
	PERCORSO AULE B1 B2 B3
	PERCORSO AULE B4 B5 B6



TAV.10	ISIS A. PAROLINI	
	36061 Bassano del Grappa (VI)	
PIANO DI EMERGENZA COVID-19		
LOCALI CONTAINER		
REV. 0	data: 05/09/2020	file: 01/0
TECNICO: Giovanni Celi		

Sede via Sonda, piano rialzato (primo)

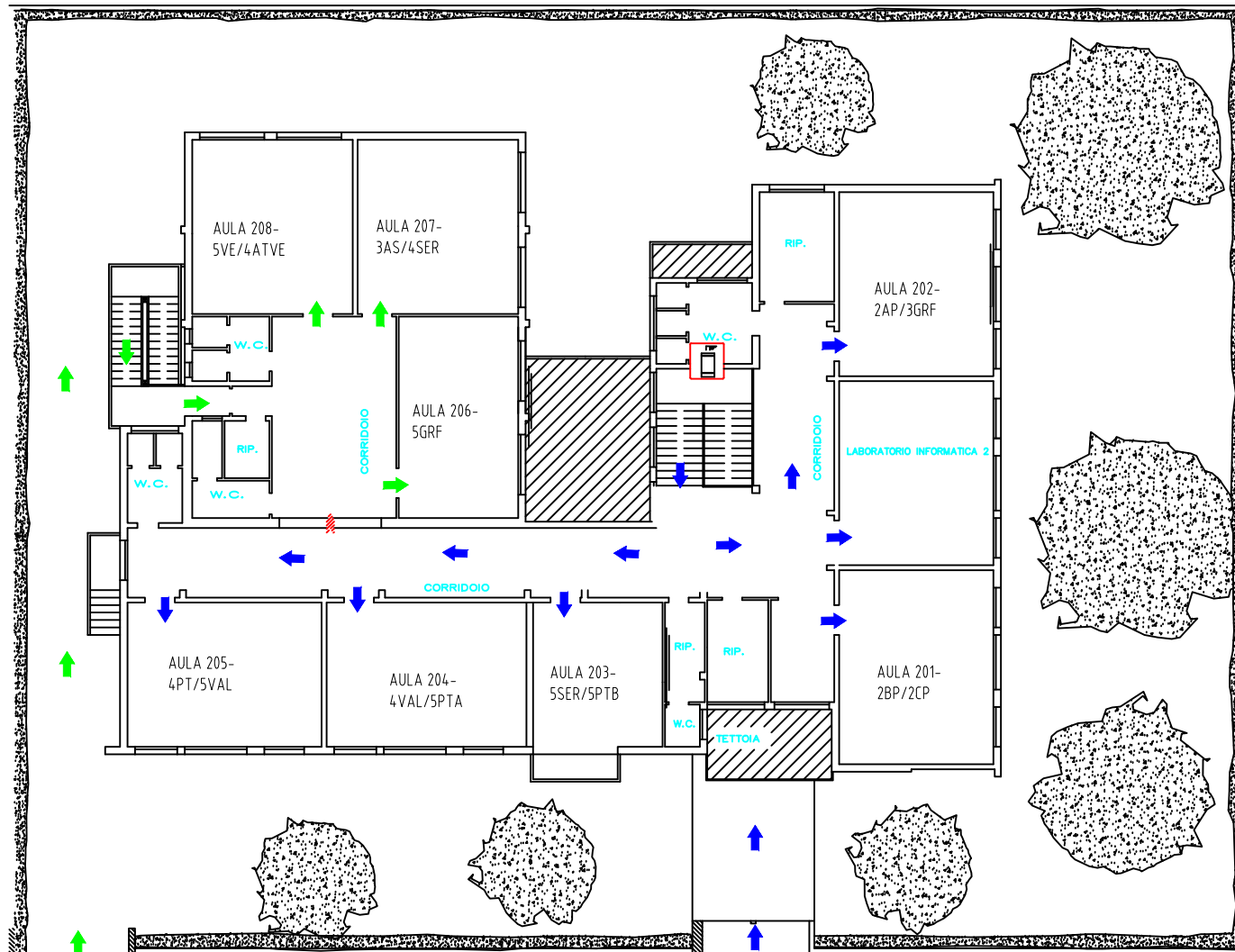
SIMBOLOGIA	LEGENDA
	PERCORSO AULE 101 102 103
	PERCORSO AULE 104 105
	CENTRALINO



TAV. 13	ISIS A. PAROLINI Succursale Via Sonda 36061 Bassano del Grappa (VI)
PIANO DI EMERGENZA COVID-19	
LOCALI PIANO RIALZATO	
REV: 0	DATA: 20/09/2020
TECNICO: Giovanni Celi	

SIMBOLOGIA	LEGENDA
	PERCORSO AULE 201 202 203 204 205
	PERCORSO AULE 206 207 208

Sede via Sonda piano primo



TAV.	ISIS A. PAROLINI Succursale Via Sonda 36061 Bassano del Grappa (VI)	
14	PIANO DI EMERGENZA COVID-19	
LOCALI	PIANO PRIMO	
REV. 0	data: 21/10/2020	file: 01/14
TECNICO:	Giovanni Celi	